

GiveWell

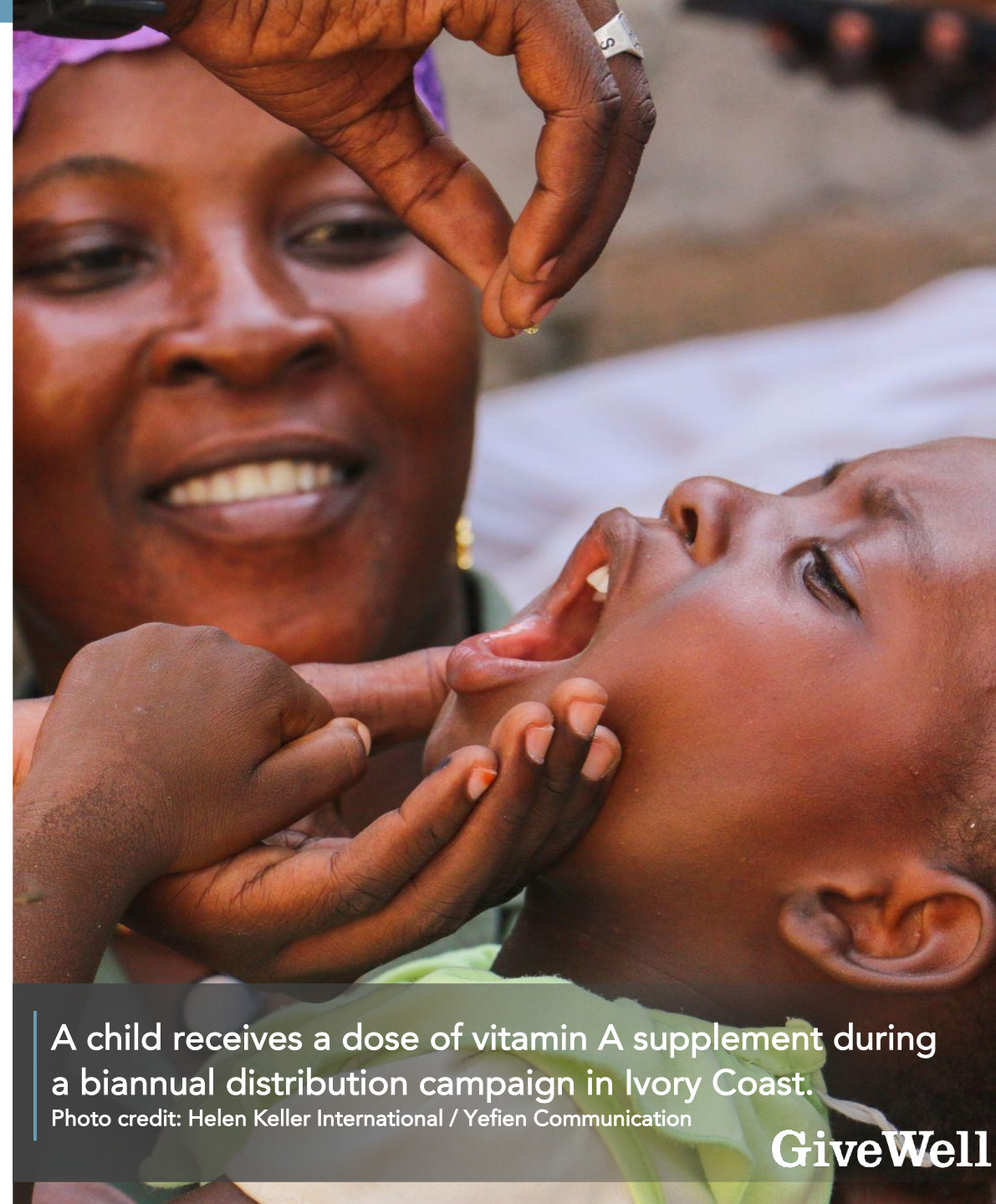
Welcome!

GiveWell's 2022 recommendations
December 1, 2022



GiveWell's mission

- Founded in 2007
 - It's our 15-year anniversary!
- Making a bigger difference at a lower cost
- Focused on saving and improving lives



A child receives a dose of vitamin A supplement during a biannual distribution campaign in Ivory Coast.

Photo credit: Helen Keller International / Yefien Communication

GiveWell

GiveWell's top charities

Malaria prevention



malaria
consortium

Vitamin A
supplementation

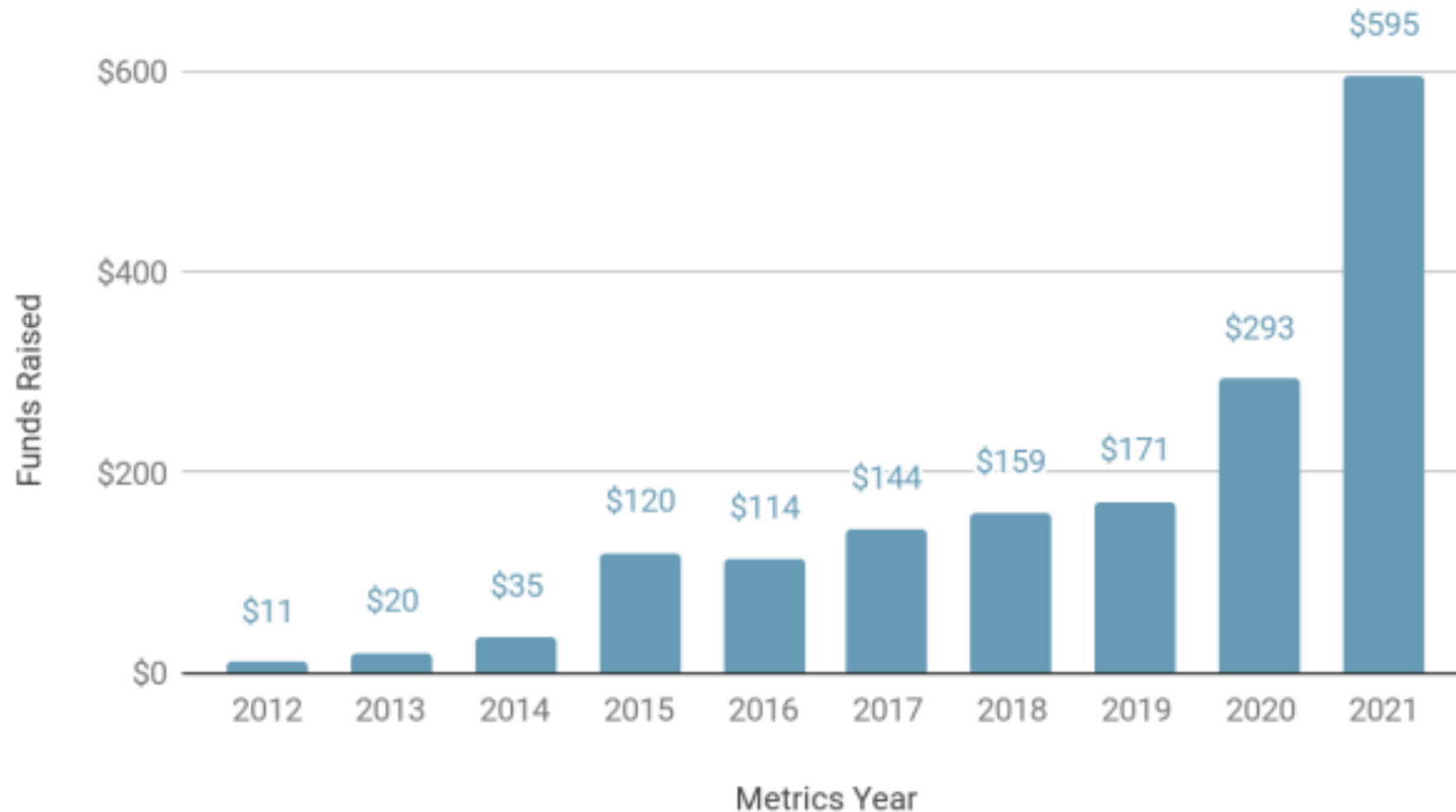


Incentives for
childhood vaccination



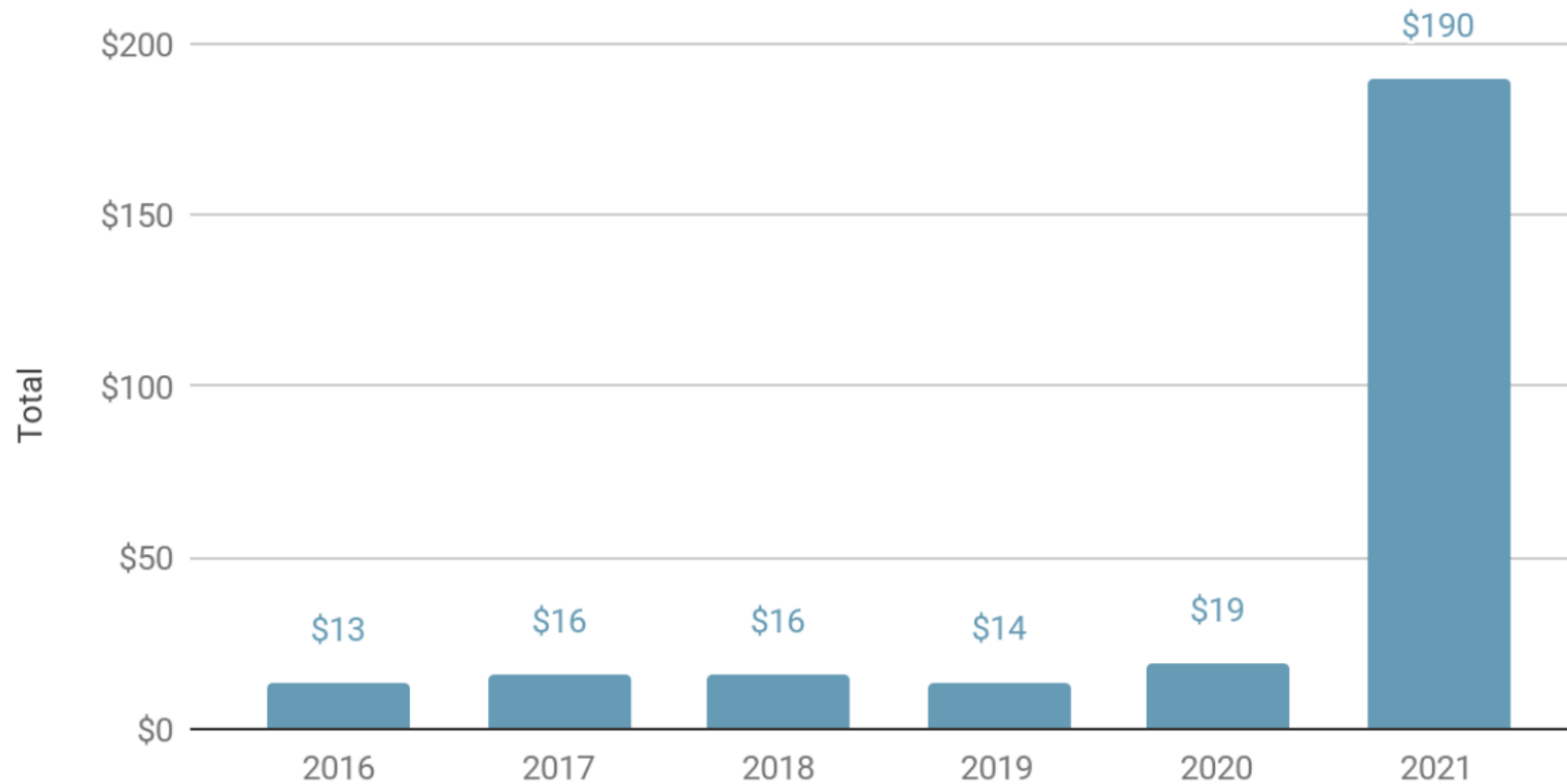
GiveWell money moved

Funds raised (in \$ millions)



GiveWell grants beyond top charities

Funds directed (in \$ millions) to programs other than top charities



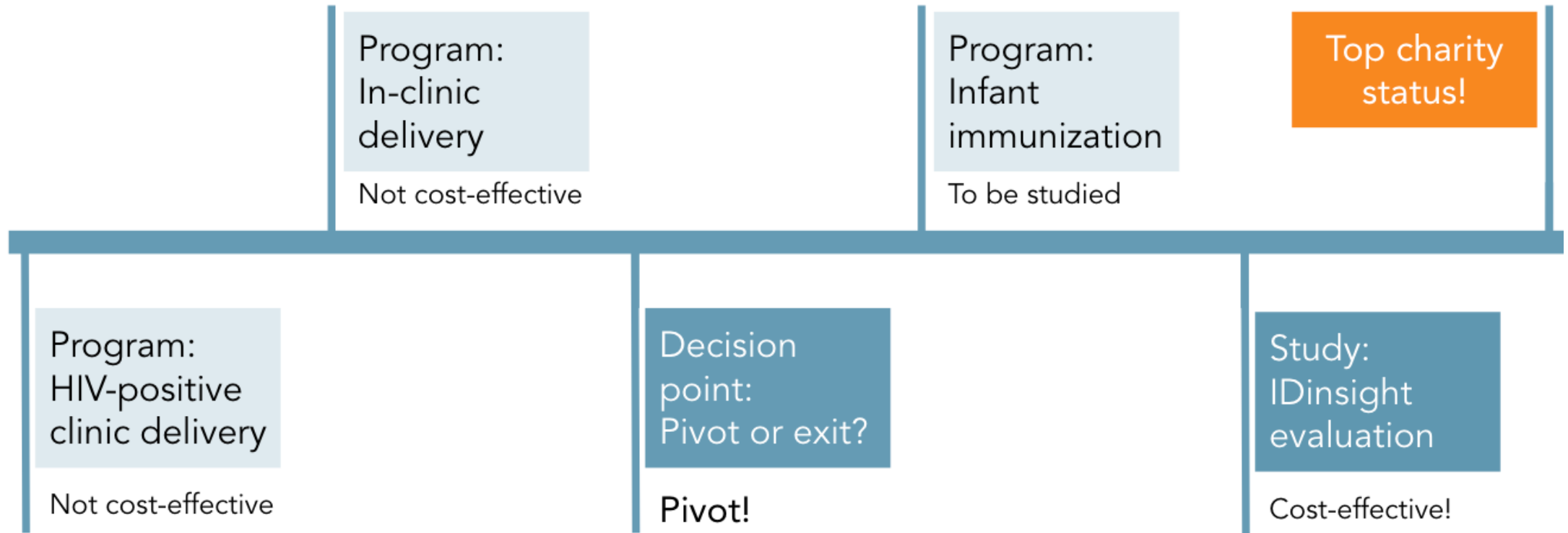
GiveWell grants beyond top charities

- We're very excited to announce the launch of our new **All Grants Fund**
- May be allocated to any grant that meets our cost-effectiveness bar
- Grants made on a rolling basis
- Good fit for donors who are open to multiple pathways to impact, including ones that are higher-risk

GiveWell grants beyond top charities

- ✓ Potentially cost-effective and scalable programs

New Incentives timeline



GiveWell grants beyond top charities

- ✓ Potentially cost-effective and scalable programs
- ✓ Established, cost-effective programs that we don't expect to scale

GiveWell grants beyond top charities

- ✓ Potentially cost-effective and scalable programs
- ✓ Established, cost-effective programs that we don't expect to scale
- ✓ Programs aiming to influence public health policy

Pure Earth

- Works to identify and reduce lead exposure in low- and middle-income countries
- Relatively neglected



**PURE
EARTH**

GiveWell grants beyond top charities

- ✓ Potentially cost-effective and scalable programs
- ✓ Established, cost-effective programs that we don't expect to scale
- ✓ Programs aiming to influence public health policy
- ✓ Organizations producing research to aid our grantmaking process

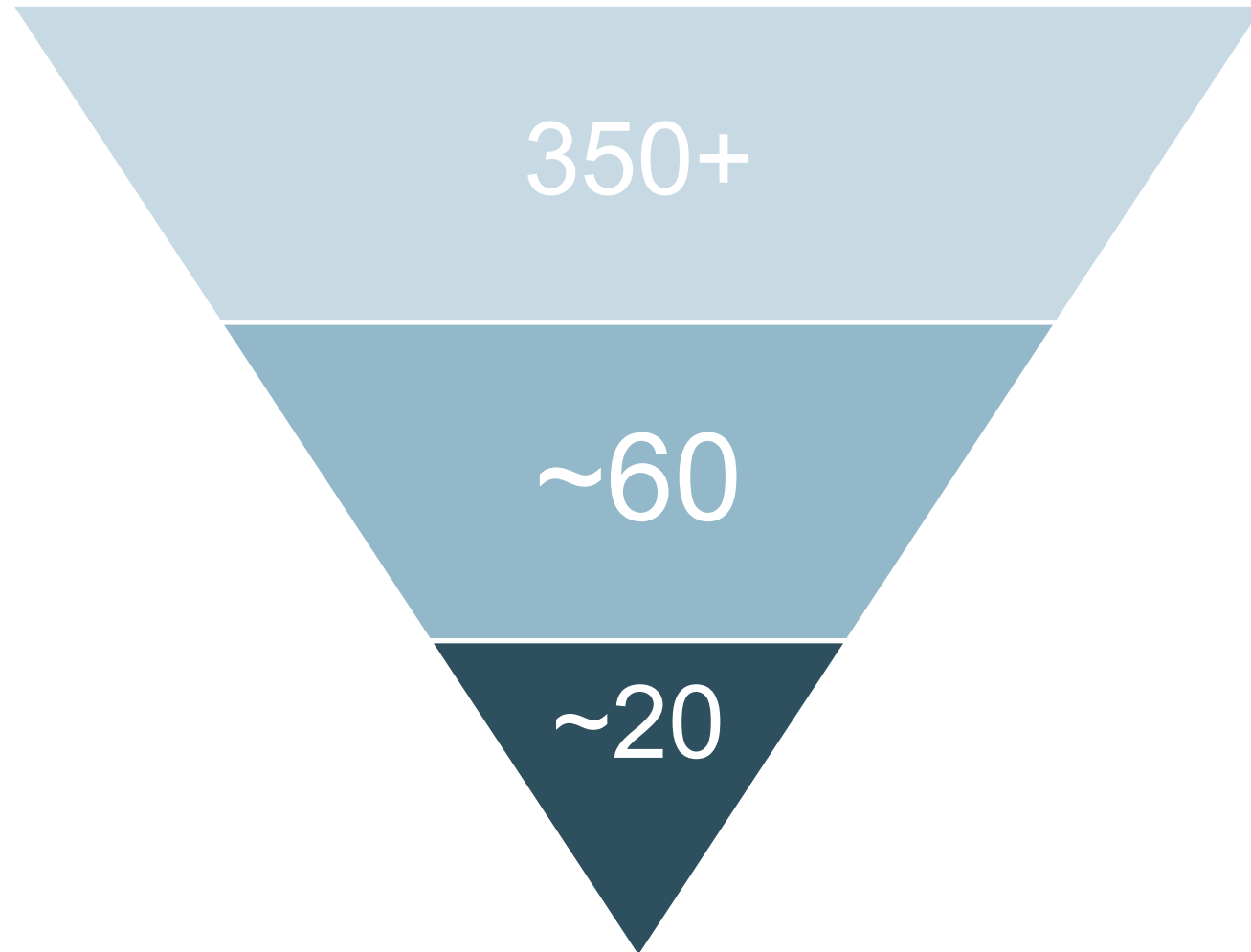
Bridges to Prosperity

- Builds bridges in rural communities to connect remote households to schools, health clinics, and markets
- GiveWell grant supporting an ongoing randomized-controlled trial in Rwanda



Bridges to Prosperity

GiveWell's new interventions pipeline



On the horizon

- **Participatory Learning and Action**
 - Prevention practices aiming to improve maternal and newborn health
- **CHAI Incubator**
 - New partnership in 2022
 - Working together to find, assess, and implement programs that have high cost-effectiveness and potential to scale

GiveWell

Focus on malaria



An SMC Community Distributor in Burkina Faso shows an infant a strip for measuring malnutrition, which may be done alongside delivery of the antimalarial medicine. Photo credit: Malaria Consortium/Sophie Garcia

Malaria

- Estimated 241 million cases of malaria worldwide in 2020
- Estimated 627,000 malaria deaths in 2020
- African continent carries a disproportionately high share of the global malaria burden
 - 95% of malaria cases and 96% of malaria deaths
 - 80% of those deaths are of children

Insecticide-treated nets

- Treated with safe, residual insecticide to kill and repel mosquitoes
- Long-lasting version can remain effective for multiple years



Photo credit: Against Malaria Foundation

Seasonal malaria chemoprevention (SMC)



- Children receive antimalarial drugs during the months of the year when malaria infection rates are highest
- Community health workers or volunteers travel household to household to administer the first dose of these drugs to children
- Caregivers give the additional doses over the subsequent days



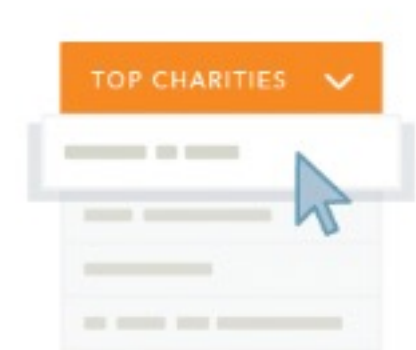
GiveWell's work on malaria

- Major cause of illness and death globally
- Evidence-backed direct delivery programs
- Cost-effective implementation
- Large funding gaps



Top Charities Fund

- The Top Charities Fund supports the highest-priority funding needs among our top charities
- We take into account:
 - Which funding gaps we expect to be filled and unfilled
 - Each charity's plans for additional funding
 - The cost-effectiveness of each funding gap



Top Charities Fund

- We recently allocated \$8.4 million in discretionary funding from our Top Charities Fund (April through June 2022) to Malaria Consortium's SMC program
- We expect these funds will support Nigeria, a country with one of the highest malaria burdens in the world



Top Charities Fund

- Nigeria has 31% of the world's malaria deaths but but does not receive a commensurate proportion of aid funding



Top Charities Fund

- This grant's impact:
 - One million children will receive a year's worth of SMC
 - Estimated 1,700 children's lives saved



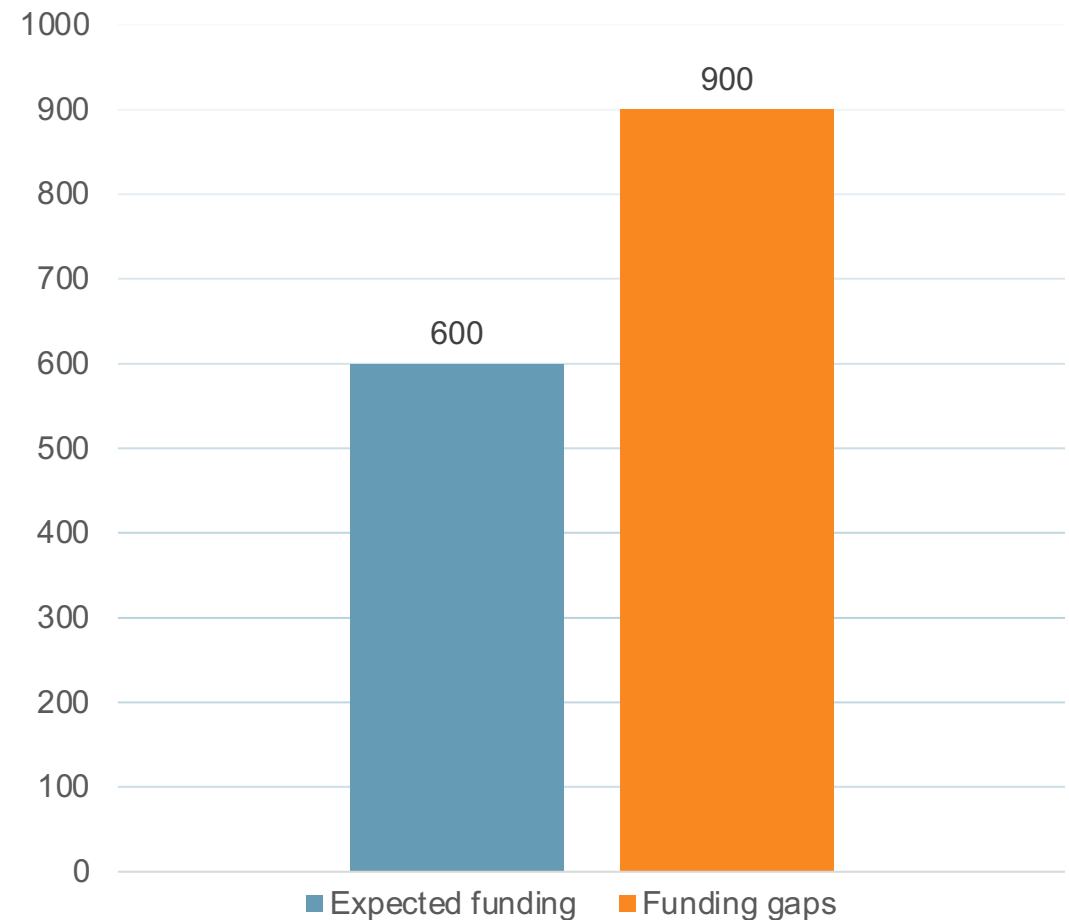
Malaria vaccine



- Grant to PATH to support the implementation of the RTS,S malaria vaccine through the end of 2023
- Will speed up implementation by approximately one year

2022 Giving recommendations

- Significant funding gaps of highly cost-effective programs
- Save a life for approximately \$5,000



Projected 2022 (in \$ millions)

Ways to give

- ❑ Unrestricted
- ❑ All Grants Fund
- ❑ Top Charities Fund
- ❑ One of our top charities





GiveWell

www.givewell.org

info@givewell.org

www.givewell.org/jobs

Caregiver and SMC Community Distributor smiling at child who has just received SPAQ (anti-malarial medicine)

Photo Credit: Malaria Consortium/Sophie Garcia

GiveWell