



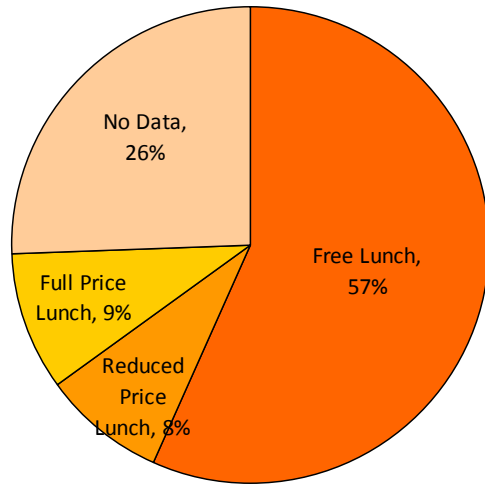
**Partnership Support Organization Data**

**September 2007**

# More NVPSO students face economic, social and academic challenges than their citywide counterparts.

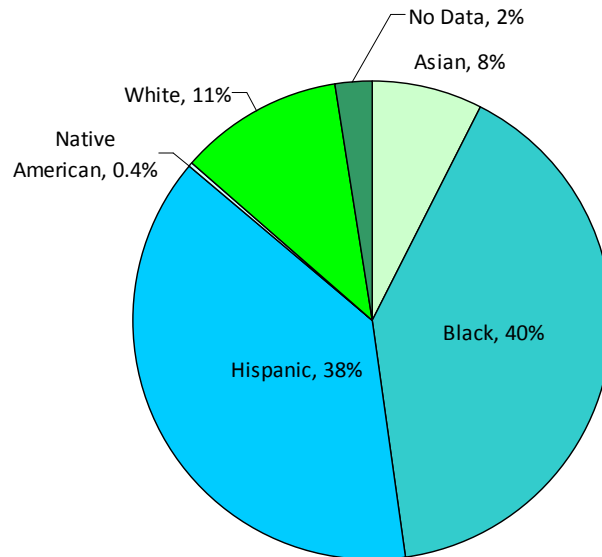
---

Poverty Status



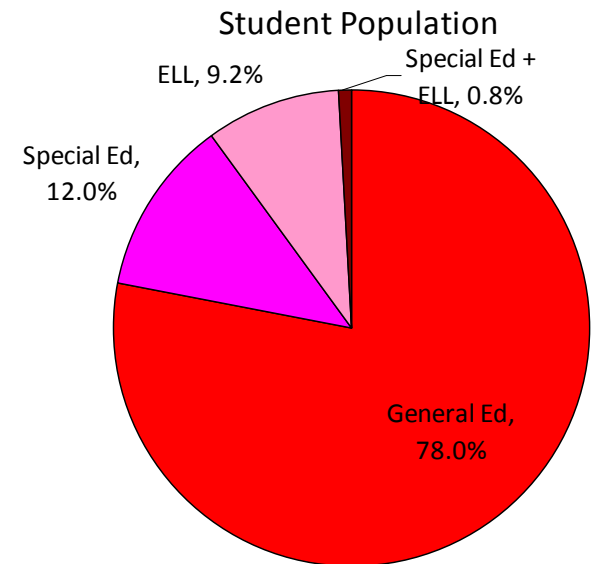
Citywide Free Lunch: **51%**  
 PSO Free Lunch: **57%**

Ethnicity



Citywide % Black or Hispanic: **67.7%**  
 PSO % Black or Hispanic: **78%**

Student Population



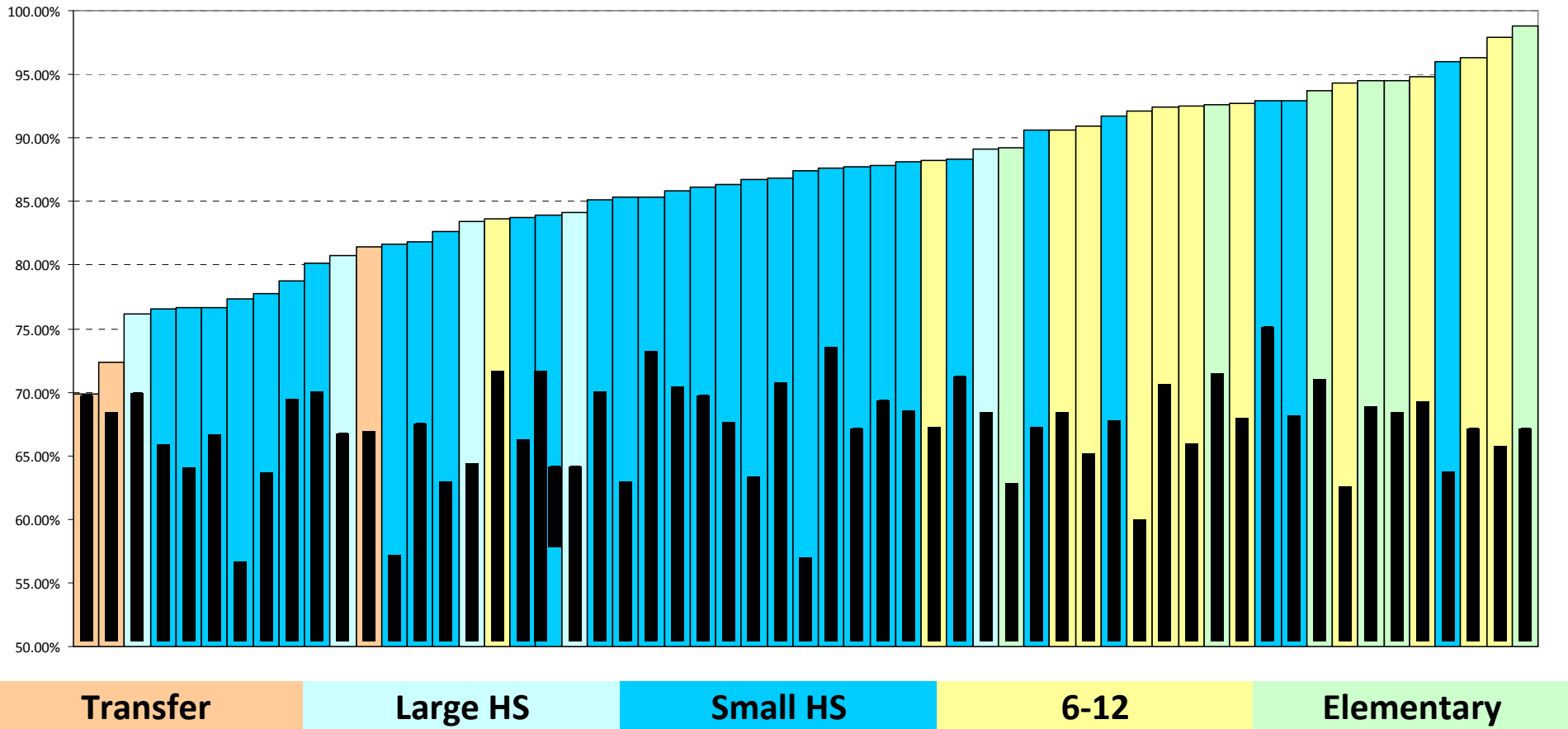
Citywide % Special Ed: **9%**  
 PSO % Special Ed: **12.8%**

---

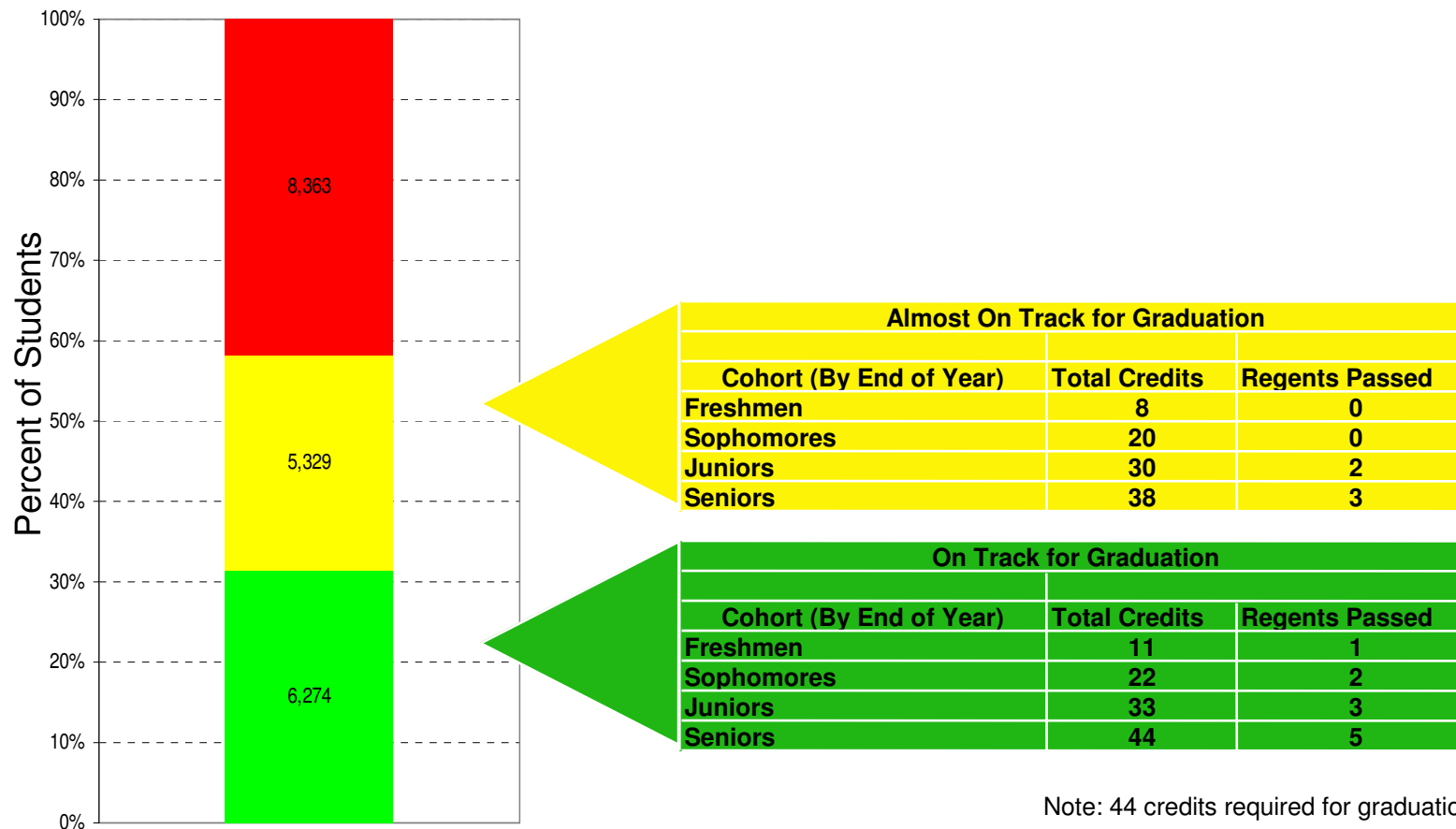
Citywide % ELL: **10.6%**  
 PSO % ELL: **10.0%**

# The average school attendance at NVPSO schools is 87%

- Citywide average: 82%
- Reaching our target of 92% continues to be a challenge.



# 58% of NVPSO high school students are on track or almost on track to graduate.



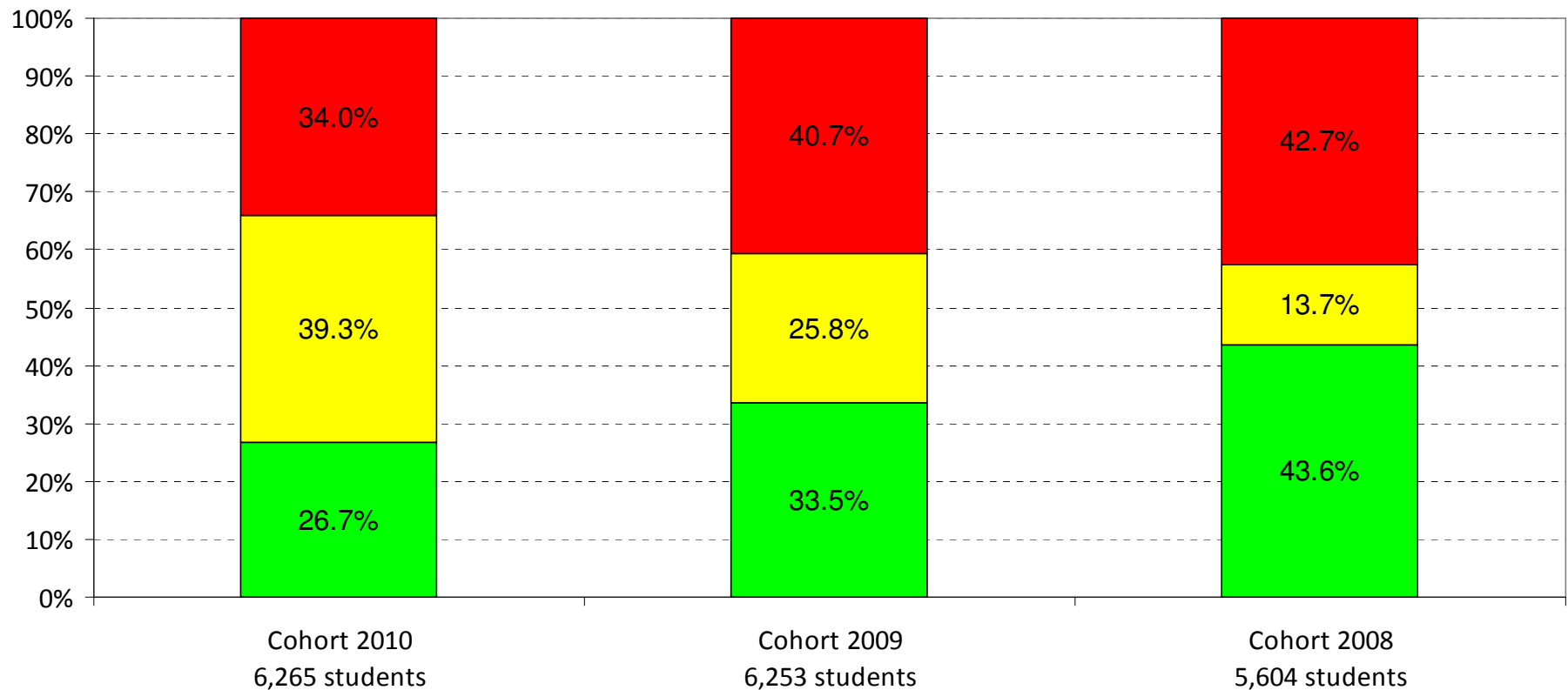
Note: 44 credits required for graduation

All students through cohort 2010 (n=19,966)  
 Excluding 3 transfer schools. Includes students who have dropped out.



# The needs of each cohort require differentiated strategies.

- NVPS will focus on helping students remain on track from the freshman year forward.



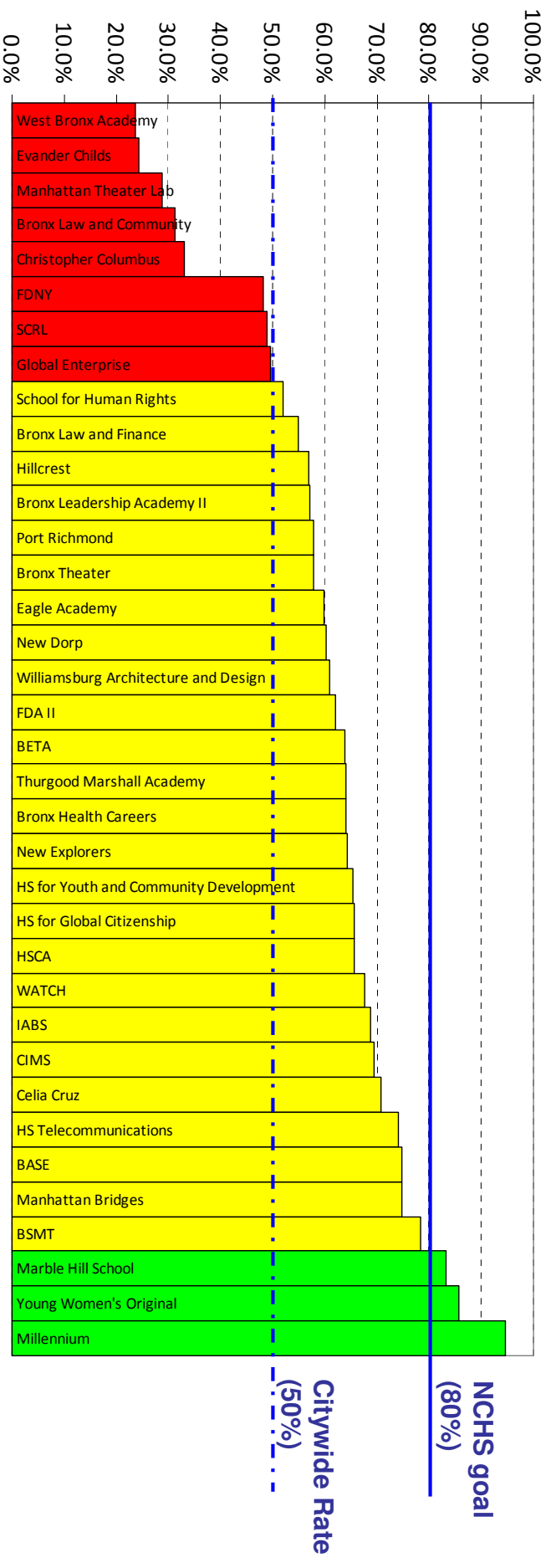
## Students on Track by Cohort

Excludes transfer schools (3), and students in a cohort of less than 20 students within their school.



**The percentage of our 2008 students on + almost on track is higher than the citywide graduation rate at 78% of our high schools.**

**Progress Toward Graduation, Cohort 2008**

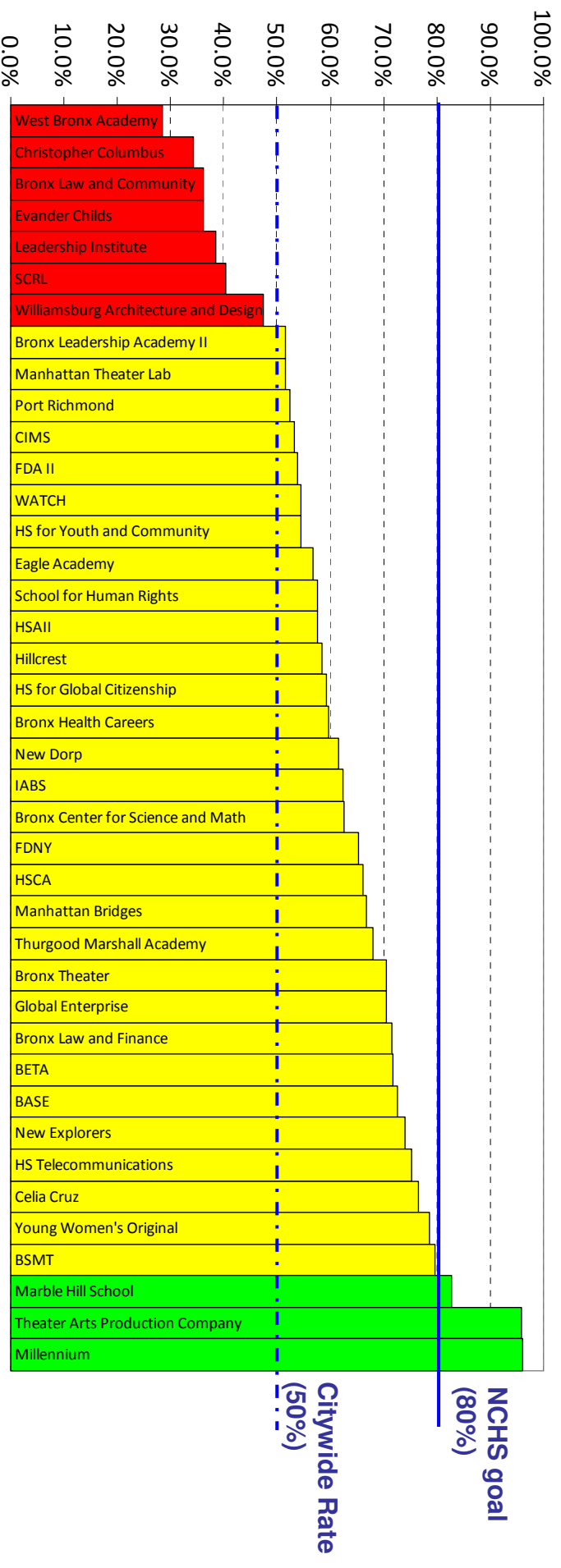


36 schools have a graduating class of Cohort 2008 students  
 Bars represent on track + almost on track students combined  
 Cohort size includes discharged students; these students are considered as off track



**The percentage of our 2009 students on + almost on track is higher than the citywide graduation rate at 83% of our high schools.**

**Progress Toward Graduation, Cohort 2009**

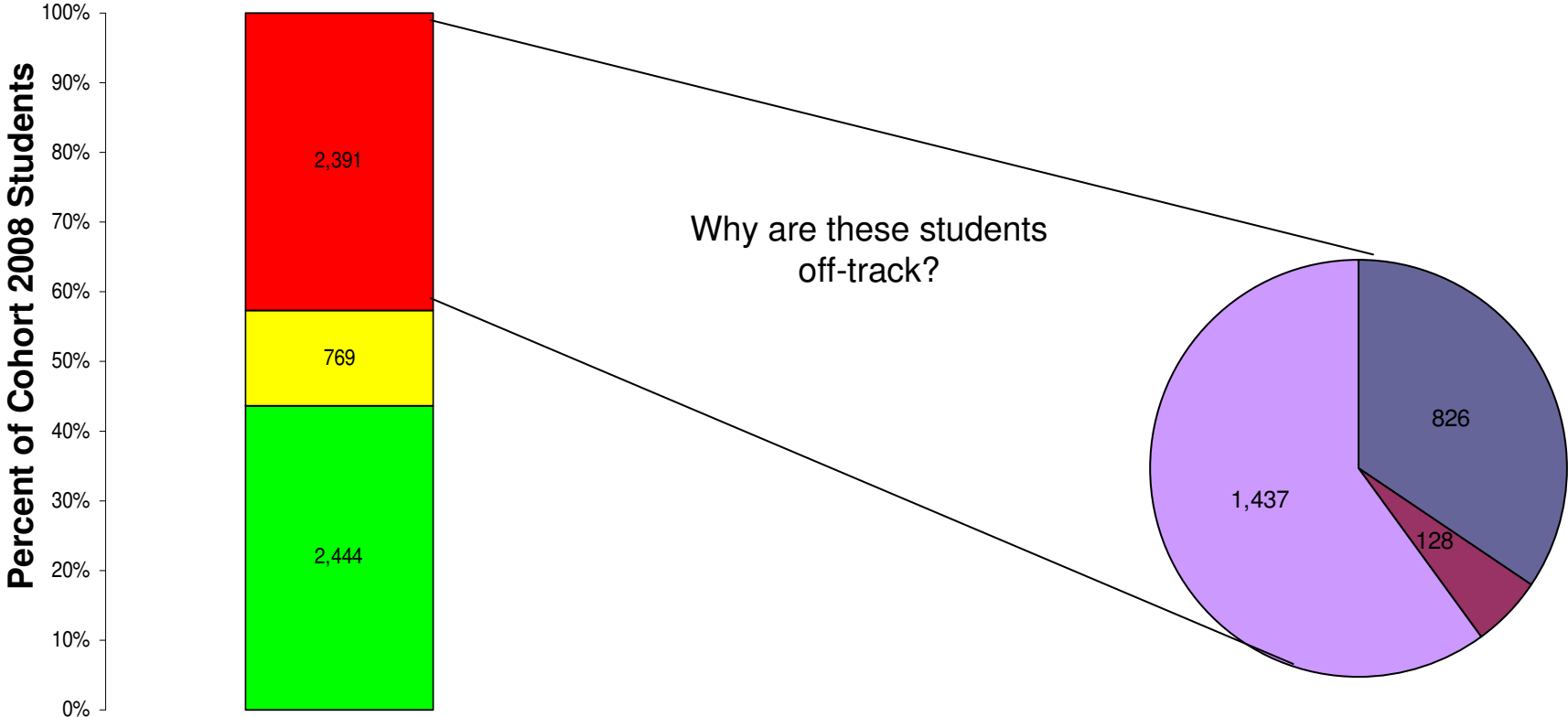


40 schools have a graduating class of Cohort 2009 students  
 Bars represent on track + almost on track students combined  
 Cohort size includes discharged students; these students are considered as off track

Off Track (7)      Almost On Track (30)      On Track (3)

**To reach our goal of 80% for cohort 2008, all of our almost on track students and 1,270 out of 2,391 off-track and discharged students will need to graduate.**

This will require intensive analysis of Regents and credit accumulation.



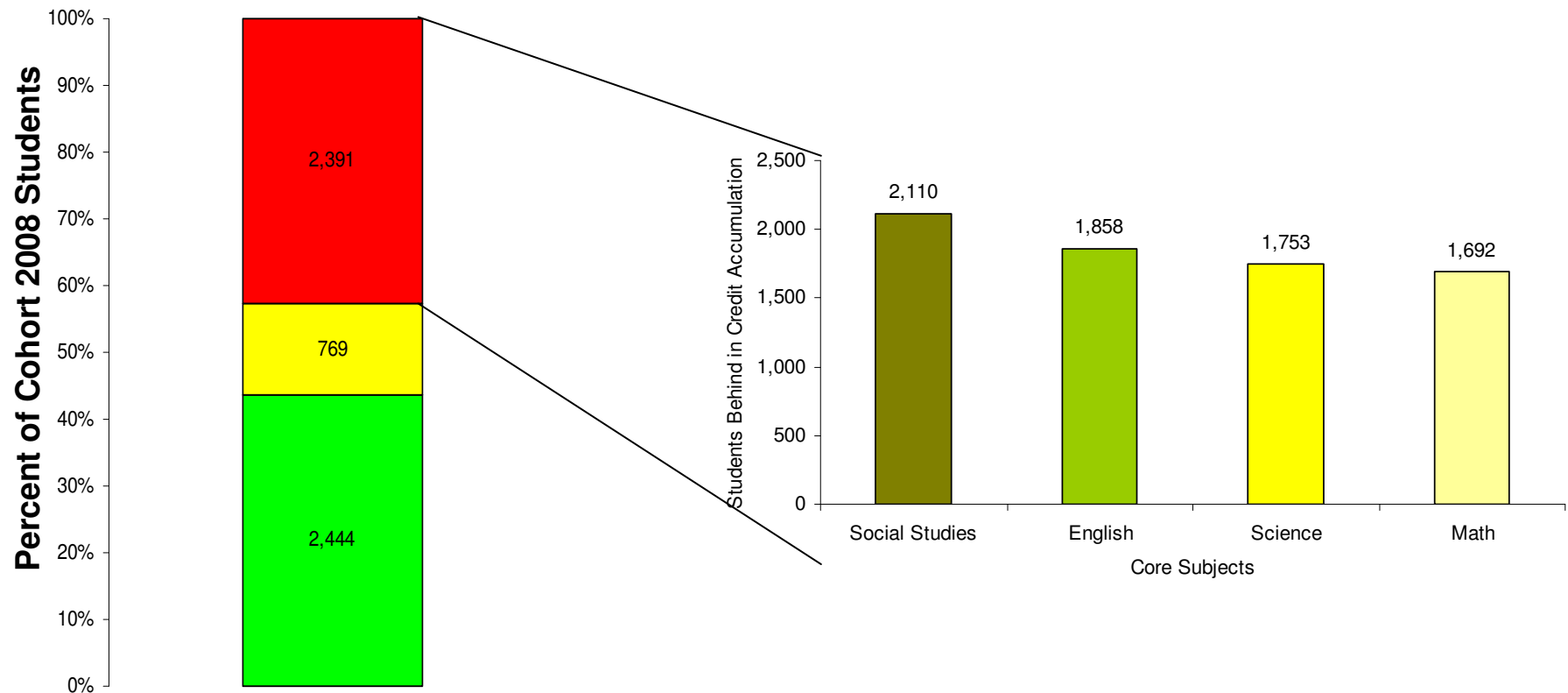
**n=5,604**

**Transfer schools excluded**

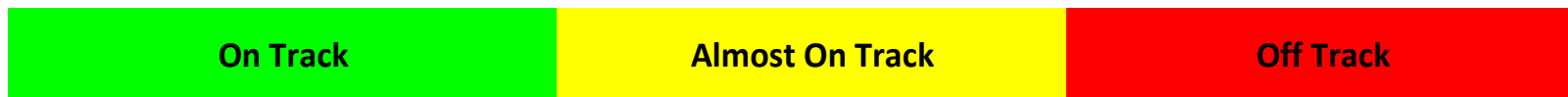




# For the 2,391 off-track students, credit accumulation is a bigger barrier in English and Social Studies than in other core subjects.



n=5,604  
Transfer schools excluded



# The 2,391 off-track students in Cohort 2008 vary substantially in what they need to graduate from high school.

**REGENTS PASSED**

	0	1	2	3	4	5
On Track in Credits	12	36	0	0	0	0
Not On Track in Overall Credits (No Specific Subject)	6	7	1	2	3	4
Not On Track in 1 Core Subject	29	64	34	42	37	32
Not On Track in 2 Core Subjects	51	73	75	68	70	56
Not On Track in 3 Core Subjects	88	86	76	56	46	15
Not On Track in 4 Core Subjects	897	216	108	55	34	12

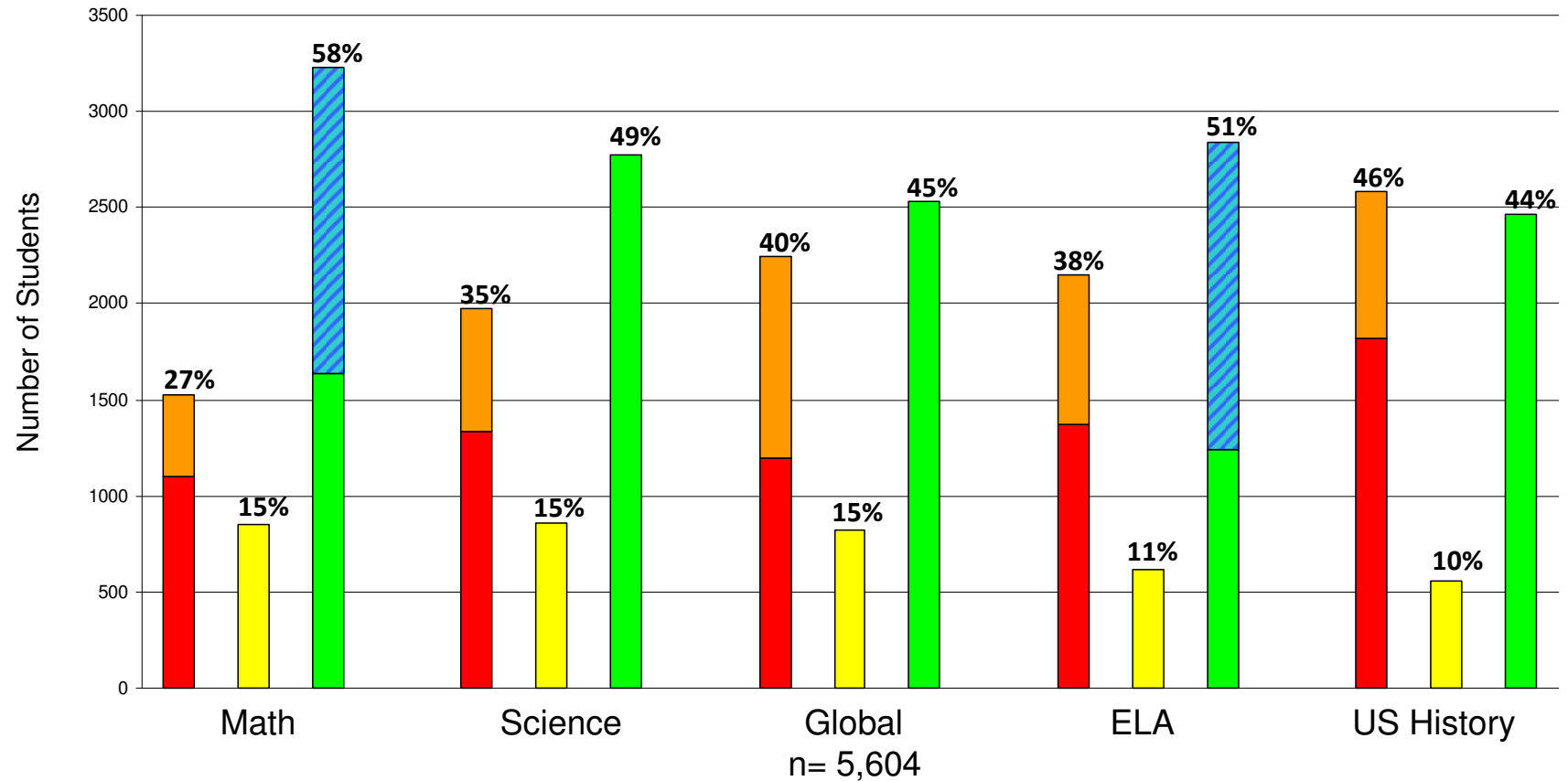
These **1,446** students will be the most difficult to help graduate.

Of all off track students in Cohort 2008, these **477** students are in the best position to graduate with targeted interventions.

**275** students, while behind in credits, have demonstrated their academic ability by passing at least 4 regents exams.

# Students are meeting some but not all Regents requirements.

After three years of high school, over one third of students still need to pass the Science, ELA, Global Studies, and US History Regents each



# The real challenge is moving students to pass Regents exams, especially ELA and Math, at college-ready levels.

---

NVPSO Class of 2007 students receiving 75 or above on the ELA and Math Regents exams.

